

# About The Smile Train.

The Smile Train is dedicated to helping the millions of children in the world who suffer from cleft lip and palate through



free surgery for children, and free training for doctors.

Since 1999, we have provided free cleft surgery for more than 275,000 children who could not afford it.

We have helped support hundreds of cleft treatment, training and education programs in more than 70 countries, and provide free resources for cleft care professionals around the world.



At the heart of all of our programs is the fundamental belief that local doctors can be empowered to help the children of their communities.

## The Medical Advisory Board

CHAIRMAN

**Court B. Cutting, M.D.**

*NYU Institute of Reconstructive Plastic Surgery*

CHAIRMAN EMERITUS

**Joseph McCarthy, M.D.**

*NYU Institute of Reconstructive Plastic Surgery*

**Philip Kuo-Ting Chen, M.D.**

*Chang Gung Memorial Hospital*

**Linda L. D'Antonio, Ph.D.**

*Loma Linda University*

**David L. Dingman, M.D.**

*Interplast, Inc.*

**Alvaro Figueroa, D.D.S., M.S.**

*Rush-Presbyterian-St. Luke's Medical Center*

**Ethilyn W. Jabs, M.D.**

*The Johns Hopkins Hospital*

**Ian T. Jackson, M.D.**

*Providence Hospital*

**Heidi Jerome, M.D.**

*Columbia Presbyterian Medical Center*

**Jan Lilja, M.D., D.D., Ph.D.**

*Sahlgrenska University Hospital*

**M. Samuel Noordhoff, M.D.**

*Chang Gung Memorial Hospital*

**Judy T. O'Young, M.D.**

*University of California at San Francisco*

**Brian Sommerlad, M.D.**

*GT Ormond Hospital for Children*

**S. Anthony Wolfe, M.D.**

*Miami Children's Hospital*

# Do You Help Children With Cleft Lip And Palate?



Become A Smile Train Partner  
And Benefit From A Broad Range Of Free Programs,  
Resources, And Technology.

**The Smile Train Headquarters**  
245 Fifth Avenue,  
Suite 2201  
New York, NY 10016  
Tel: 212.689.9199  
Fax: 212.689.9299  
www.smiletrain.org

**Smile Train China**  
Ste. 2307, Bldg. D,  
88 Jianguo Rd.  
SOHO New Town  
Beijing 100022  
PRC  
Tel: 86.10.8580.3030  
Fax: 86.10.8580.3131

**Smile Train India**  
S 240 Panchsheel Park  
New Delhi 110 017  
INDIA  
Tel: 91.11.2601.36.48  
Fax: 91.11.2601.36.49

**Smile Train Latin America**  
Rua Dr. Luis Capriglione 200  
Ithanhanga 22641-050  
Rio de Janeiro, RJ  
BRAZIL  
Tel: 55.21.2492.3509  
Fax: 55.21.2494.8472

**Smile Train Mexico**  
Privada San Dieguito  
Nr. 8  
Acapantzingo,  
Cuernavaca  
Morelos 62440  
MEXICO  
Tel: 52.777.314.1038

**Smile Train Philippines**  
c/o Richville Corporate  
Tower, 5th Floor  
1107 Alabang-Zapote Road  
Madrigal Business Park,  
Ayala Alabang  
Muntinlupa City 1780,  
Metro Manila  
PHILIPPINES  
Tel: 63.917.817.2260

**Smile Train Thailand**  
45 Soi Yenjit 6  
Jant Road, Satorn  
Bangkok 10120  
THAILAND  
Tel: 66.2.211.5385  
Fax: 66.2.211.5385

**Smile Train Indonesia**  
Perkantoran Cempaka Mas  
Blok A No. 33, Lt. 3-4  
Jl. Letjen. Suprpto  
Jakarta Pusat 10640  
INDONESIA  
Tel: 61.21.424.1020  
Fax: 61.21.424.1278



# Partnership Is What The Smile Train Is All About.

From the very beginning, The Smile Train has believed in the power of partnership.

We believed that by working with partners and forming strategic alliances, we could help more children, in less time, for less money. By collaborating, cooperating, sharing resources, talent, experience and expertise, we and our partners could do things that none of us could do alone.

Eight years later, we know just how powerful partnership can be. Today, we have thousands of partners and hundreds of Smile Train programs throughout the world:

- Working together, we have provided free cleft surgery for more than 275,000 children in less than eight years.
- Working together, we provide free surgery for more than 200 children every day.
- Working together, we have provided free education and training for more than 23,000 medical professionals.

Working together is key. Although we come from more than 70 different countries, very different backgrounds and cultures, work in a broad range of different kinds of organizations and environments, and speak collectively more than 100 different languages, one thing does unite us.

A common goal of helping children who have no place else to turn. To give them not just a new smile, but a second chance at life. If this is your goal, we'd like to partner with you.



Brian Mullaney  
Co-Founder & President



## Why Become A Smile Train Partner?

Because no matter what you do, chances are The Smile Train can help you do it better.

We can help you improve your skills, enhance your education and broaden your experience. We support a broad range of free cleft education programs including major symposiums, hands-on workshops, and one-on-one mentoring. The faculty includes the most accomplished and respected cleft experts in the world.



We can offer you free educational tools and technology that will help you learn and teach in ways you never imagined. Our virtual surgery software for cleft lip and palate has helped thousands of surgeons learn new techniques. And we've built the world's largest cleft library with tens of thousands of pages of cleft-related medical content.

We can help you and your hospital or clinic improve the quality of cleft care you provide. Our Smile Train Safety & Quality

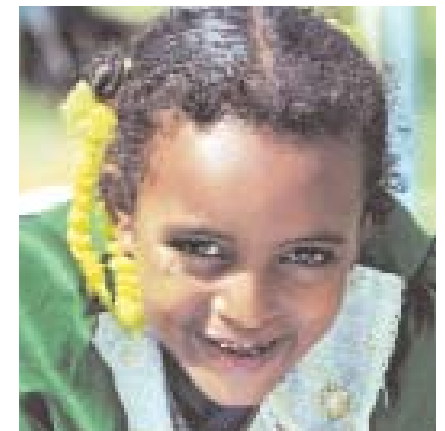


Improvement Protocol has been adopted by hundreds of hospitals around the world. And we offer a free, web-based cleft database for state-of-the-art cleft patient record-keeping.

We can help you provide free surgery for children who can't afford it. Our Grant Programs can help pay for a portion of these costs and help you increase the number of children you help.

We can help your patients and their families learn more about cleft lip and palate and the treatment they need. Our web site has thousands of pages of invaluable medical advice and resources.

These are just a few of the ways we can help you help your cleft patients. To learn more, just turn the page...



# Smile Train Programs & Resources.

## Free Virtual Surgery Software Training Videos

These videos leverage the power of virtual reality and 3-D animation to make even the most complex surgical techniques simple and easy to understand.

Available for unilateral cleft lip, bilateral cleft lip and cleft



palate. Faculty: Drs. Court Cutting, Donato LaRosa, Harold McComb, D. Ralph Millard, Jr., John Mulliken, M. Samuel Noordhoff, and Brian Sommerlad. To order your free set, visit [www.smiletrain.org](http://www.smiletrain.org).

## Free Online Patient Database

Built and hosted by Computer Associates, one of the world's leading software companies, Smile Train



Express is a comprehensive, secure, patient-record keeping system that is being used to store and manage tens of thousands of patient records every year. Any doctor or hospital is welcome to use this database for free. Visit [www.smiletrain.org](http://www.smiletrain.org) to register and receive your own password.

Visit  
[www.SmileTrain.org](http://www.SmileTrain.org)  
to order your  
FREE Virtual DVD

## Smile Train Global Cleft Network

When you become a Smile Train partner you join a network of thousands of experienced and accomplished cleft medical professionals. Many of our partners exchange advice and support in a variety of ways. Wherever you travel in the world, chances are there will be some kind of Smile Train Program nearby that you can visit and exchange ideas and experiences.



## Free Online Cleft Library

Now thousands of the most valuable and respected cleft-related medical journal articles are just a mouse click away. More than 10 years worth of content is available from all of the top medical



journals including Annals of Plastic Surgery, Plastic & Reconstructive Surgery Journal, Journal of Craniofacial Surgery, Cleft Palate-Craniofacial Journal. The cleft medical library is free and fully searchable. Visit [www.smiletrain.org](http://www.smiletrain.org).

# Smile Train Grant Programs

The Smile Train funds hundreds of partners and programs throughout the world that help poor children receive treatment they could otherwise never afford.

## Our Funding Principles

### We Do...

- Focus exclusively on programs related to cleft lip and palate.
- Focus on the poorest countries with the highest incidence of clefts.
- Support programs that provide free treatment for poor children.
- Support doctors and hospitals that need financial assistance.
- Focus on low-cost high impact interventions.
- Leverage our support by cost sharing with our partners.
- Foster self-sufficiency in our partners.
- Closely monitor and manage all of our programs and partners.
- Require all of our partners to adhere to the highest standards of safety and quality.

### We Don't...

- Pay for treatment for children whose families can afford it.
- Replace funding, or pay for surgeries that other organizations will pay for (government, insurance, charities, etc.).
- Support organizations that do not provide safe and high quality treatment.
- Fund large capital expenses or major equipment expenditures.

To Apply  
For A Partnership  
Or A Grant, Visit  
[www.SmileTrain.org](http://www.SmileTrain.org).



## The Smile Train Self-Sufficiency Model

Over time, we encourage and expect our partners to become more self-sufficient and less dependent on The Smile Train. This enables us to support new programs and help them get on the path to self-sufficiency.

## The Importance Of Leverage

The Smile Train encourages and expects our partners to leverage Smile Train support to attract and develop other sources of support. Every dollar we invest generates matching funds and contributions of all kinds.



## Treatment Partnerships

These partners receive a contribution-per-surgery to help cover a portion of the costs involved in providing free cleft treatment for poor children. The goal is to substantially increase the number of children being helped. The amount of the contribution-per-surgery varies depending on the country, volume of cases, hospital costs, etc. All Treatment Partners must meet and adhere to The Smile Train Safety and Quality Improvement Protocol and use our online patient record-keeping database to submit patient records.



## Treatment Grants

These grants are one-time grants that support treatment for poor children. These grants supplement care for children who would not otherwise receive help through free treatment (i.e. surgery, orthodontia, speech therapy), improving the quality of treatment or providing for related expenses such as equipment, outreach programs, and patient travel.



## Education & Training Grants

These grants aim to improve the safety and quality of cleft care worldwide. They are restricted to in-country training and education, not U.S.-based training. The grants are not intended for funding individual travel needs to conferences and symposiums.

To Apply  
For A Partnership  
Or A Grant, Visit  
[www.SmileTrain.org](http://www.SmileTrain.org)



## The 10 Principles Of The Smile Train.

1. Insure patient safety is our #1 priority.
2. Focus exclusively on the problem of clefts.
3. Foster self-sufficiency through free training and education.
4. Provide free surgery for children who can't afford it.
5. Embrace an interdisciplinary team approach.
6. Invest in research to find a way to prevent clefts.
7. Leverage technology to accelerate learning results.
8. Partner with other cleft organizations and share resources.
9. Operate the most cost-efficient cleft organization in the world.
10. Work ourselves out of a job.

## How To Become A Smile Train Partner.

Simply go to [www.SmileTrain.org](http://www.SmileTrain.org) to download grant applications, order a Virtual Surgery DVD, and use our free online resources. Or, fill out the information below and send it to us.

Yes, I want to become a Smile Train Partner. Please send me more information on the following:

- Smile Train Virtual Surgery Training DVDs.
- Smile Train Cleft Medical Library.
- Smile Train Cleft Patient Online Database.
- Smile Train Safety and Quality Improvement Protocol
- Smile Train Treatment Partnerships.
- Smile Train Treatment Grants.
- Smile Train Education Grants.

Name \_\_\_\_\_

Title \_\_\_\_\_

Hospital/Clinic/Organization \_\_\_\_\_

Address \_\_\_\_\_

City \_\_\_\_\_ State \_\_\_\_\_ Zip Code \_\_\_\_\_

Country \_\_\_\_\_

Telephone \_\_\_\_\_

Fax \_\_\_\_\_

Email \_\_\_\_\_

Mail to: The Smile Train, 245 Fifth Avenue, New York, NY 10016 USA

Visit: [www.SmileTrain.org](http://www.SmileTrain.org)

Email: [info@SmileTrain.org](mailto:info@SmileTrain.org)

Call: 1-877-KID-SMILE